

SCHEMI CALCOLO SUPERFICI LORDE
VARIANTE

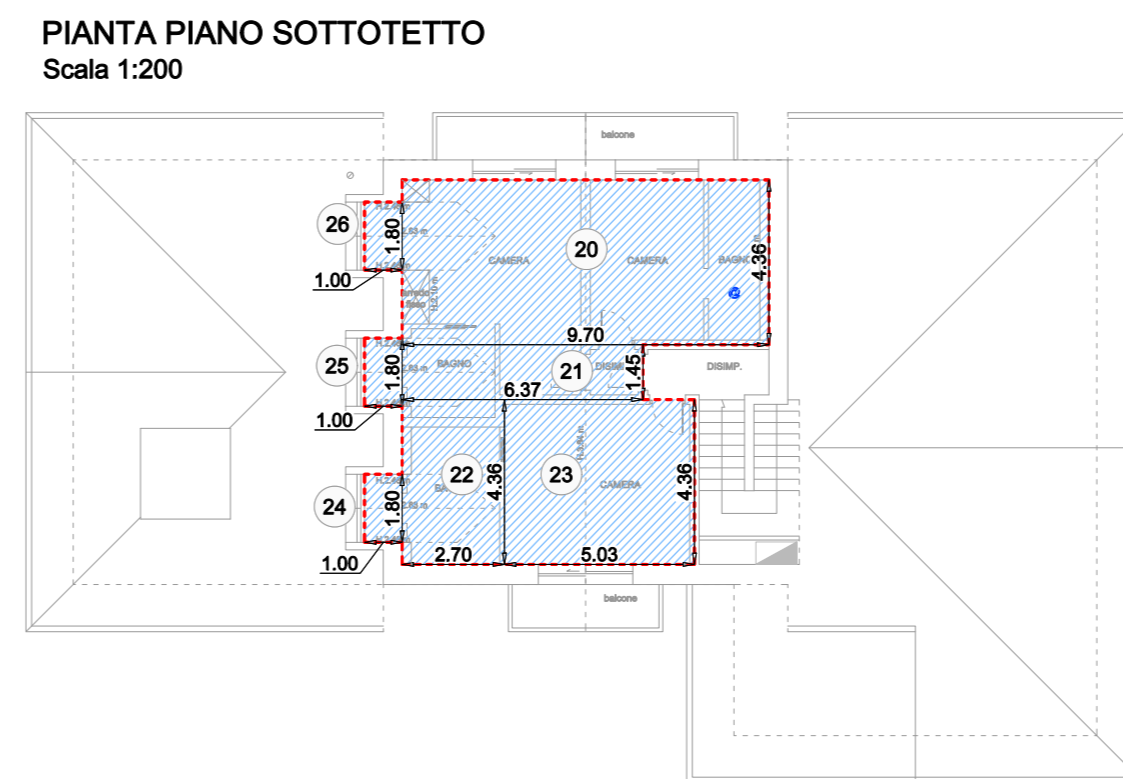
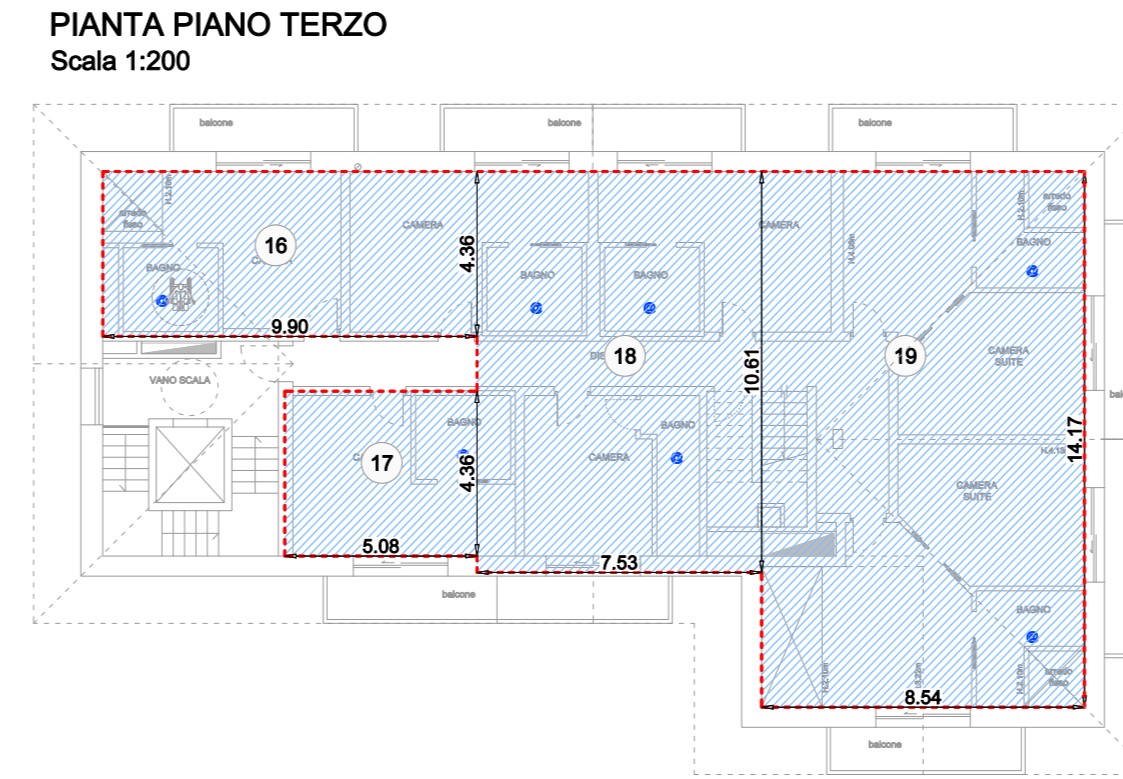
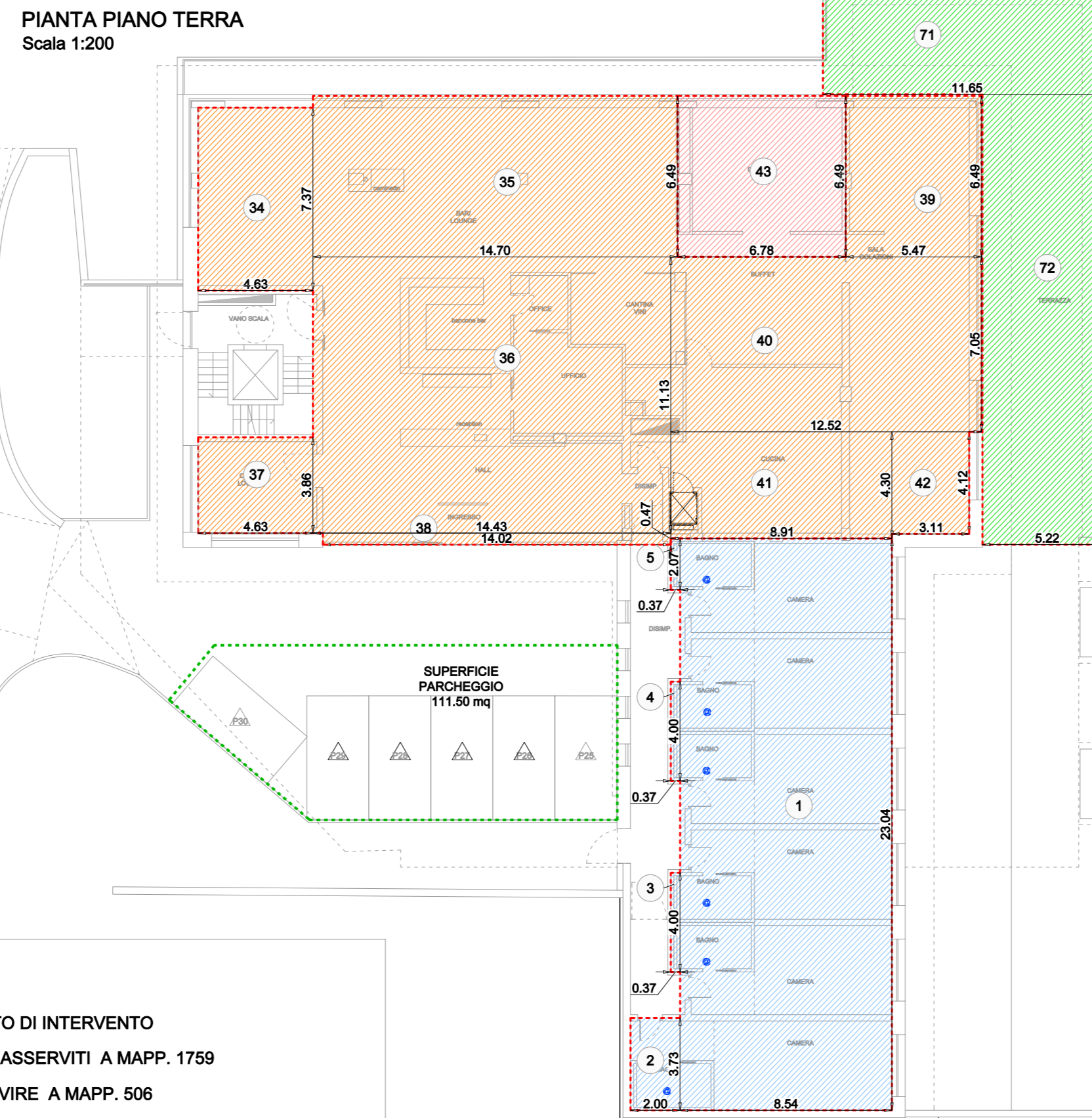
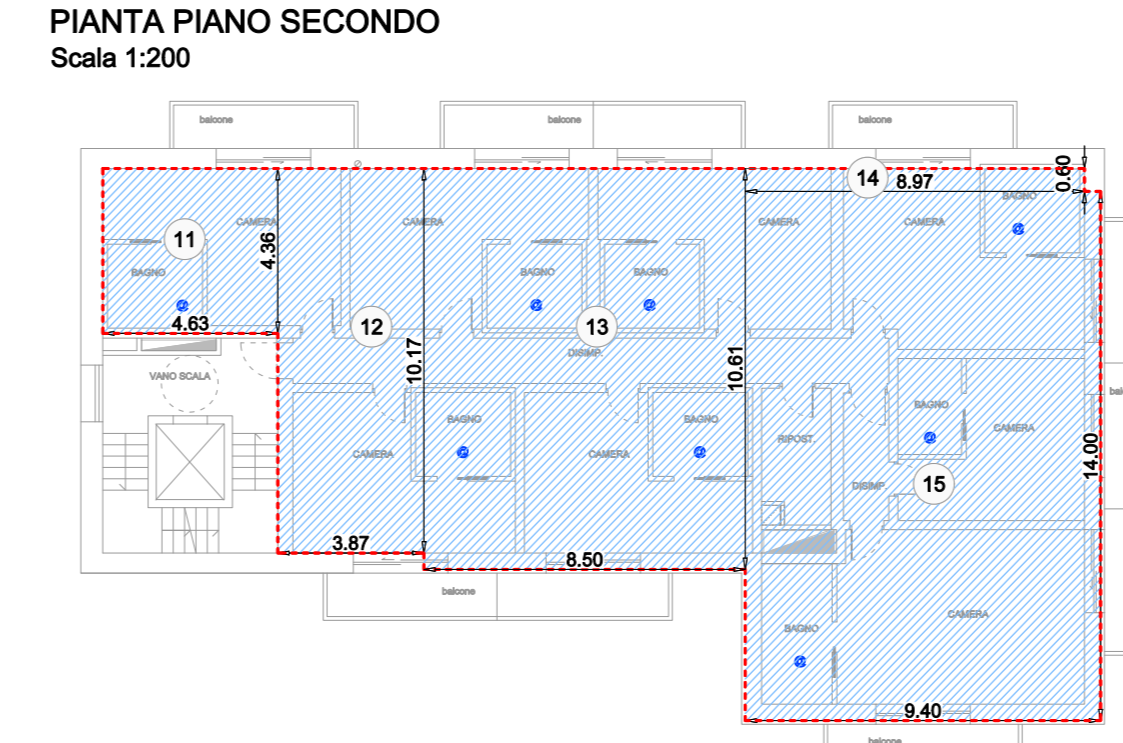
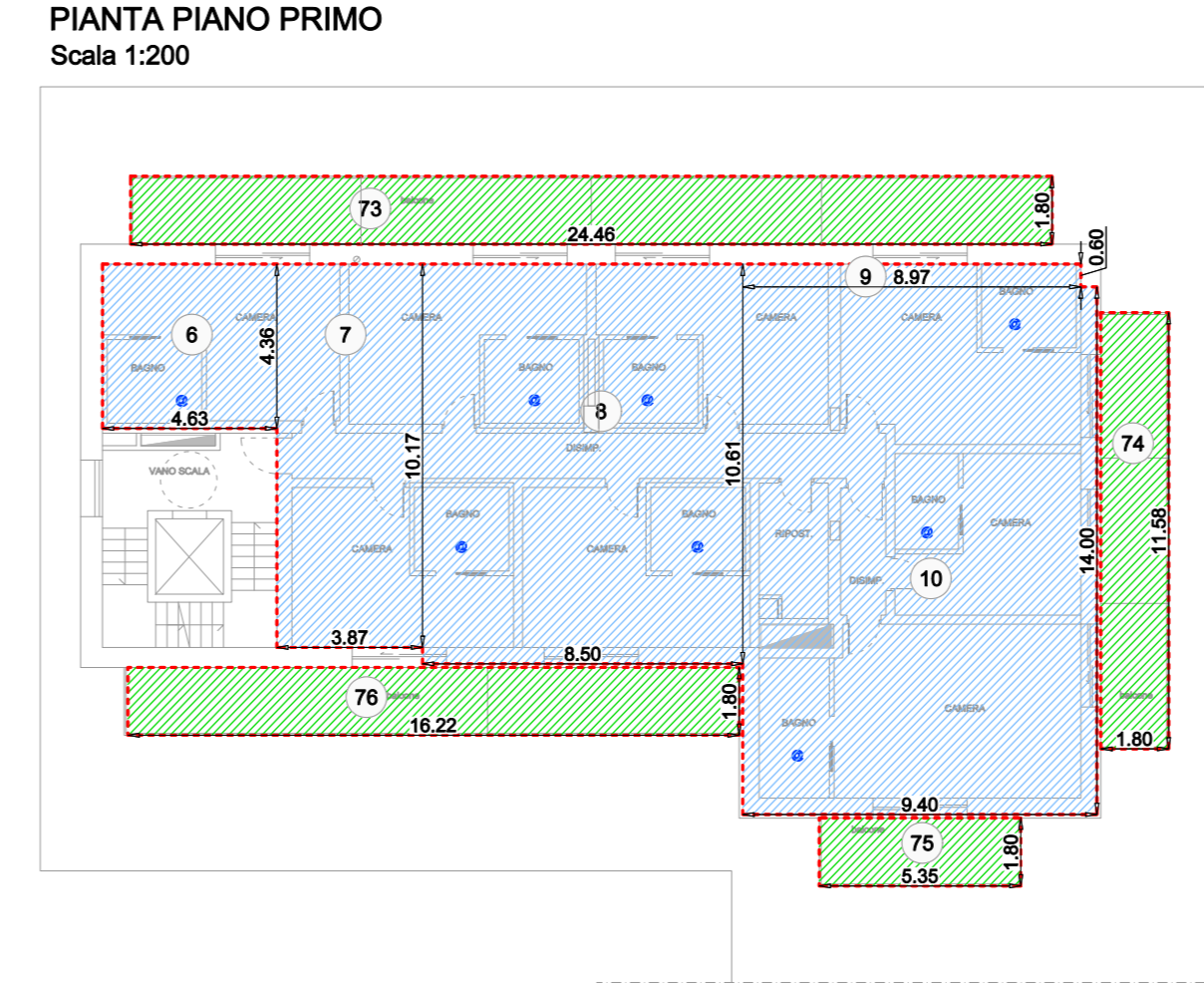
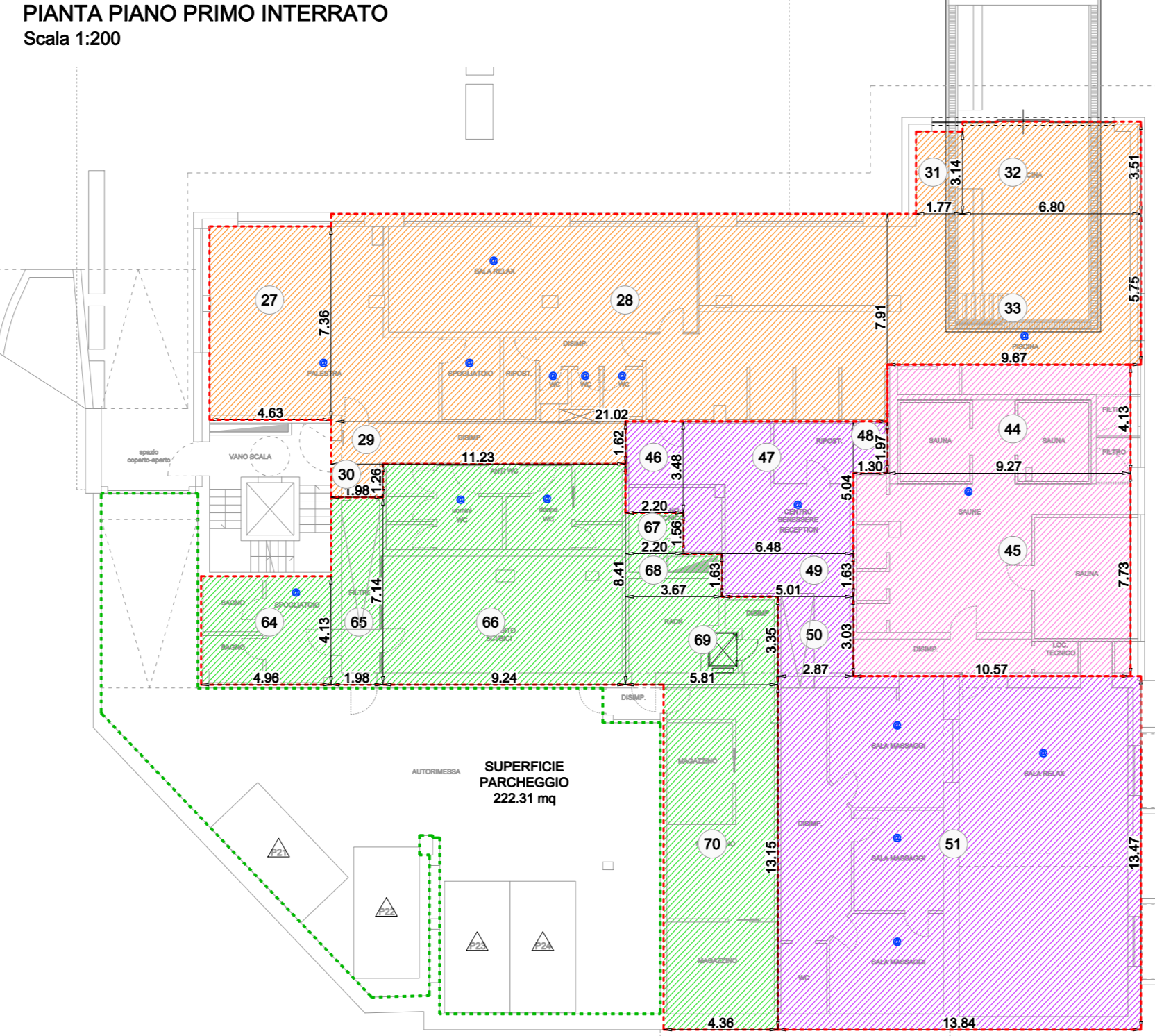
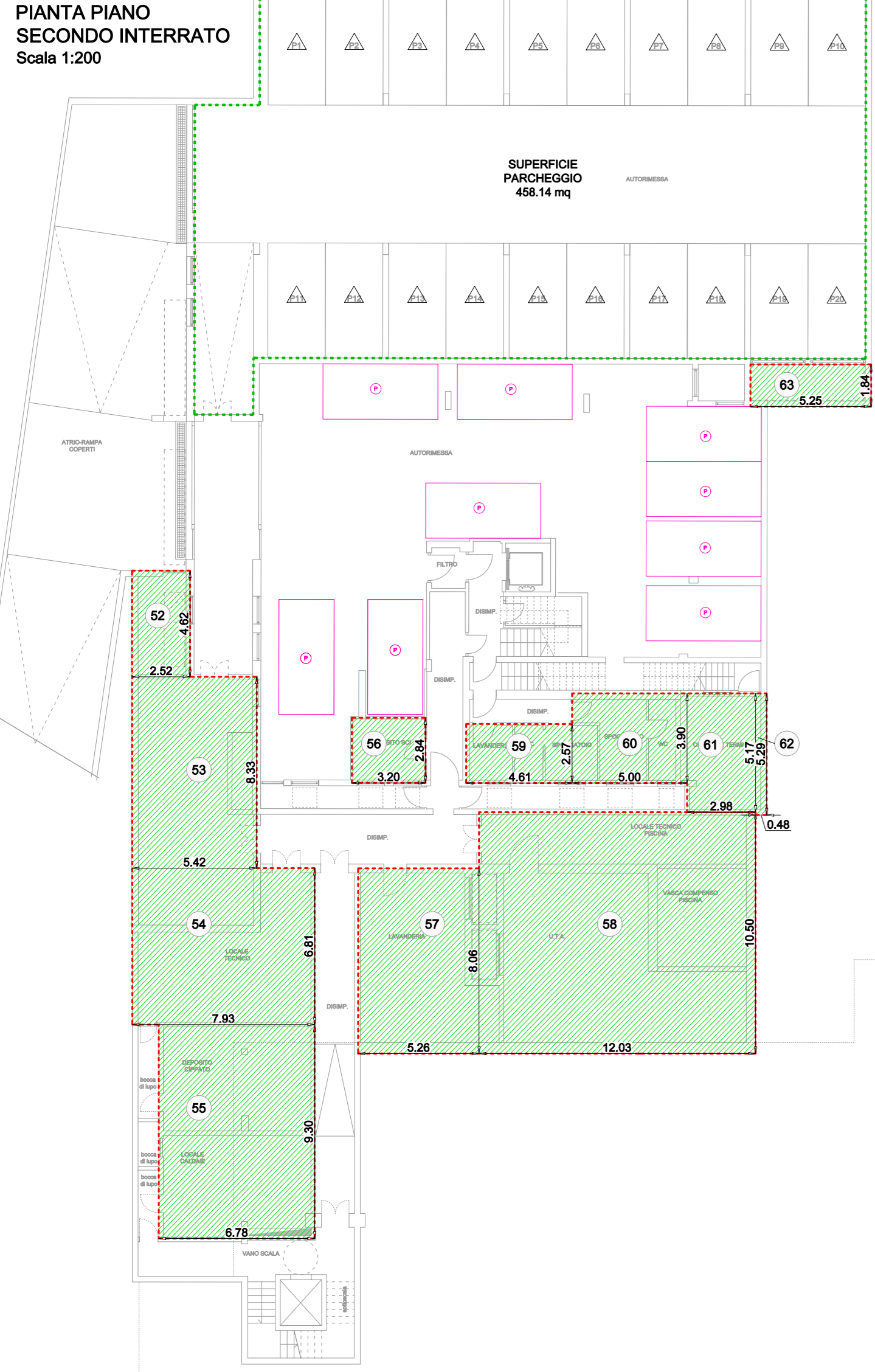


Table: CALCOLO SUPERFICIE LORDA DESTINATA A SERVIZI COMUNI. Summary of surface area calculations for various levels: Piano Terra (207.85), Piano Primo (208.21), Piano Secondo (208.21), Piano Terzo (97.02), Piano Sottotetto (21.93). Totale Superficie: 1144.62 sqm.

Table: CALCOLO SUPERFICIE LORDA DESTINATA A SERVIZI COMUNI. Summary of surface area calculations for various levels: Piano Primo Interrato (307.48), Piano Terra (307.48), Piano Secondo Interrato (407.75), Piano Primo Interrato (204.88), Piano Primo (204.88). Totale Superficie: 1963.96 sqm.

Table: CALCOLO SUPERFICIE COMMERCIALE. Summary of surface area calculations for various levels: Piano Terra (44.00), Piano Secondo Interrato (118.94), Piano Primo Interrato (204.88), Piano Primo (204.88). Totale Superficie: 562.56 sqm.

SCHEMI CALCOLO VOLUME

Table: CALCOLO VOLUME MAPP. 506. Volume calculation table with columns for room number, surface area, height, and volume. Total volume is 7919.40 m³.

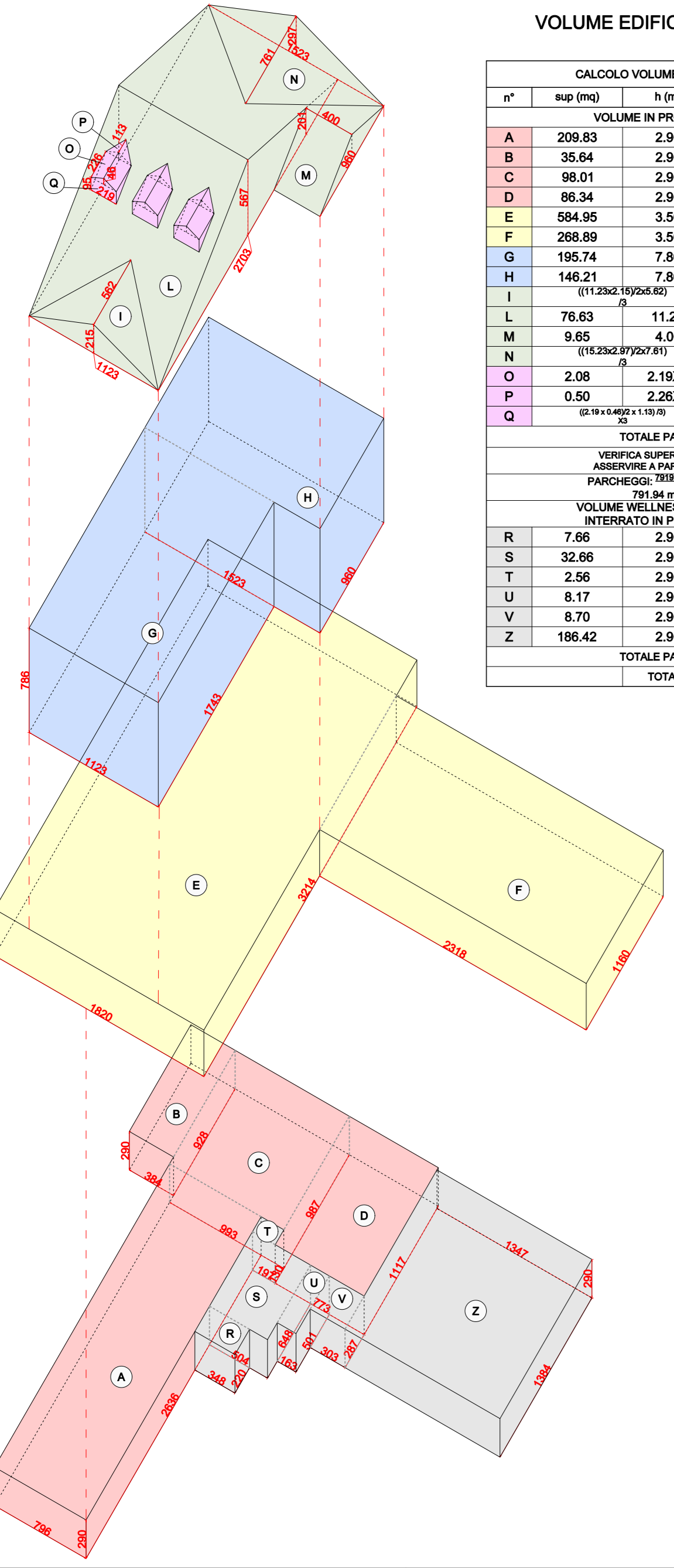
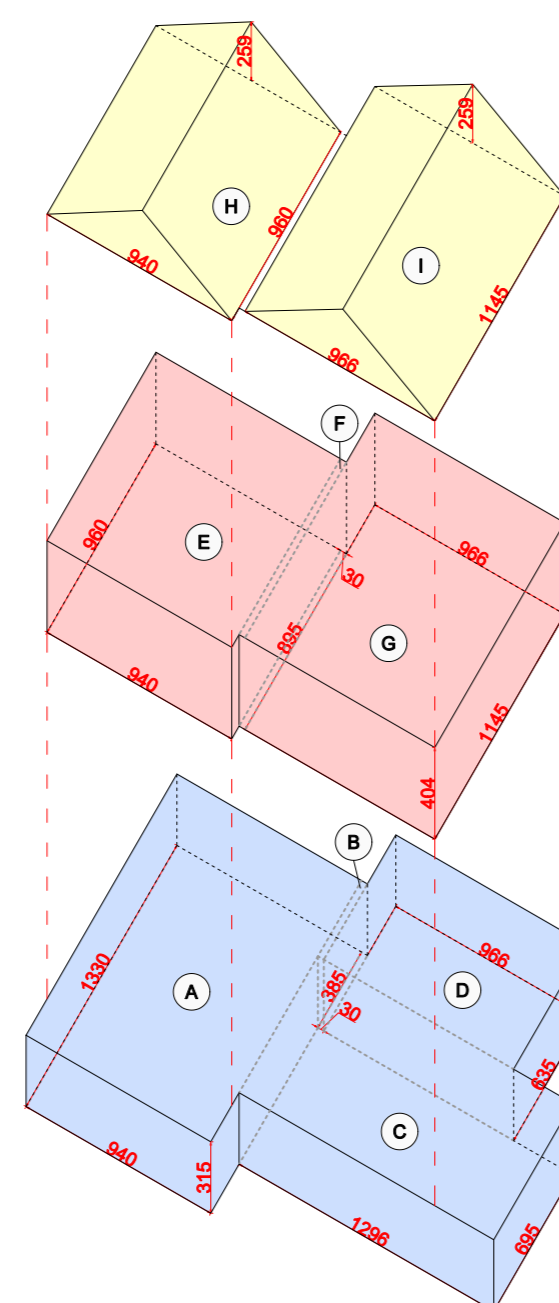


Table: CALCOLO VOLUME MAPP. 1759. Volume calculation table with columns for room number, surface area, height, and volume. Total volume is 1955.29 m³.



LEGENDA

- Porzioni non oggetto di intervento (grey box)
- Posti auto esistenti asserviti a Mapp. 1759 (pink circle)
- Posti auto da asservire a Mapp. 506 (blue triangle)
- Superficie destinata a parcheggio asservito a Mapp. 506: 458.14mq + 222.31mq + 111.00mq = 791.95mq (green dashed box)

Table: DETERMINAZIONE POSTI AUTO DA ASSERVIRE A MAPP. 506. Comparison of previsions from P.G.T. and project, showing 32 existing and 32 proposed spots.

Table: VERIFICA DENSITA' EDILIZIA. Verification of building density according to art. 7 of the Decree of the Ministry of the Interior n. 1444 of 02/04/1968.

VERIFICA INDICI URBANISTICI E PARAMETRI EDIFICATORI P.G.T.

Table: VERIFICA INDICI URBANISTICI E PARAMETRI EDIFICATORI P.G.T. Verification of urban and building parameters for the project variant.

EDIFICIO ESISTENTE MAPP. 1759

- SUPERFICIE LORDA ESISTENTE Mapp. 1759 : 529.70 mq (cfr Permesso di Costruire n. 224/07 protocollo n. 26642 cat X/10 rilasciato il 12.12.2007)
- POSTI LETTO ESISTENTI Mapp. 1759 : 20 posti letto

Table: DETERMINAZIONE S.L. REALIZZABILE. Summary of realizable surface area (S.L.) for the existing building, including the increase from the previous map.

Table: DETERMINAZIONE S.L. DESTINATA A CENTRO FITNESS. Summary of surface area (S.L.) for the fitness center, including the increase from the previous map.

Table: VERIFICA PERCENTUALE CAMERE - SERVIZI COMUNI. Verification of the percentage of rooms and common services.

Project information block including date (15 luglio 2024), client (HOTEL PARADISO S.R.L.), scale (1:200), and project title (PROGETTO VARIANTE A PDC N. 352/2022 PROT. N. 10468 DEL 23/04/2024 PER RISTRUTTURAZIONE, AMPLIAMENTO E RICOGLIFFICAZIONE STRUTTURALE TURISTICO-RICETTIVA ESISTENTE IN VIA FRETTA A LUKKO).