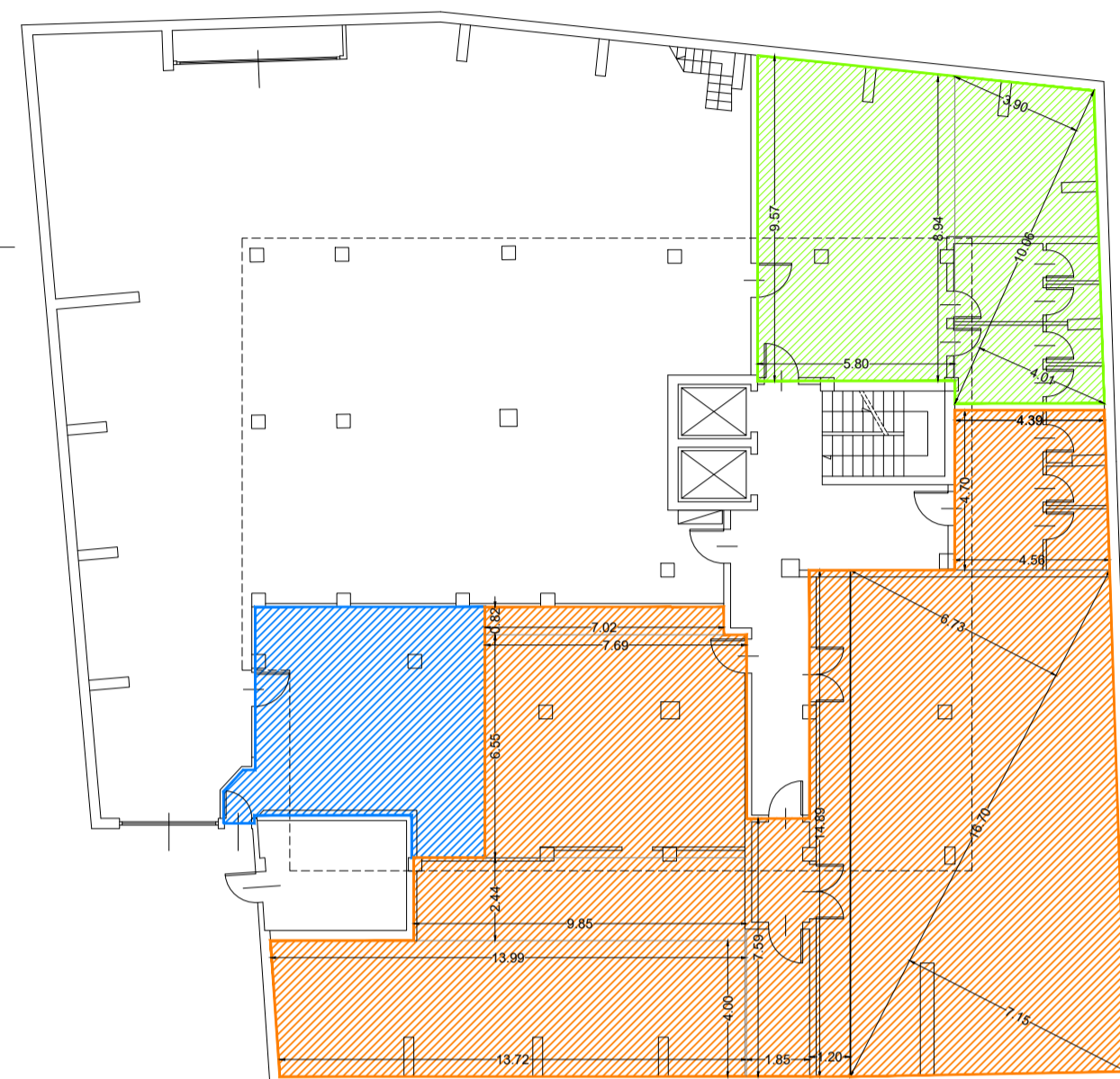


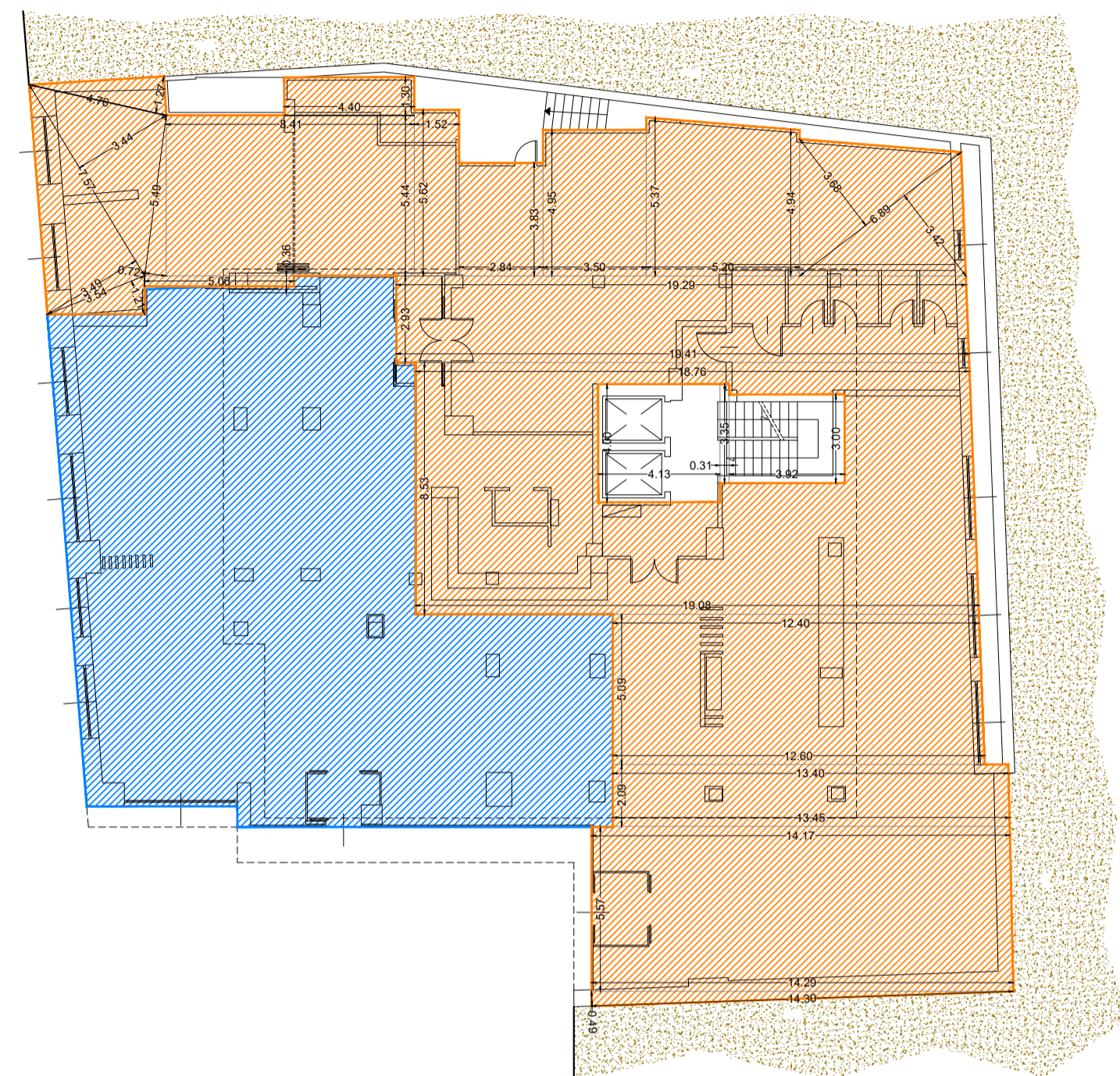
PIANO INTERRATO



PIANO INTERRATO

0.82 x 7.02 =	5.76mq
7.69 x 6.55 =	50.37mq
9.95 x 2.44 =	24.28mq
7.59 x 1.85 =	14.04mq
(13.94+13.72)/2 x 4.00 =	55.42mq
1.20 x 14.89 =	17.87mq
(26.10 x 7.79)/2 =	56.20mq
(16.70 x 7.15)/2 =	59.70mq
(6.54+20.2)/2 x 4.20 =	23.03mq
SLP TURISTICO-RICETTIVA	304.39mq
Sup. COMMERCIALE (come approvata)	45.39mq
(9.57+8.94)/2 x 5.80 =	53.68mq
(10.08 x 3.90) =	39.61mq
(10.08 x 4.93) =	20.11mq
SUP ACCESSORIA	93.46mq

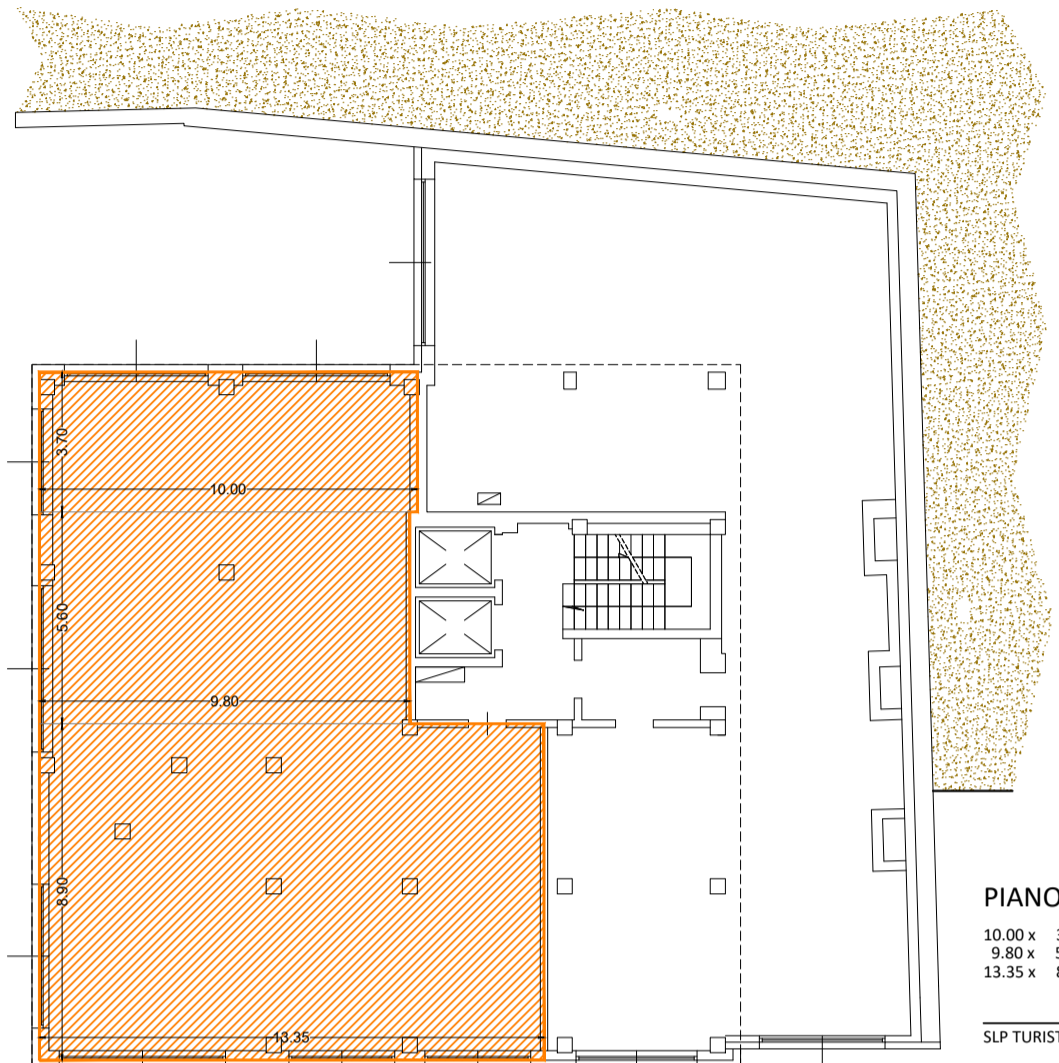
PIANO SEMINTERRATO



PIANO SEMINTERRATO

(4.76 x 1.27)/2 =	3.02mq
(7.57 x 3.44)/2 =	13.02mq
(7.57 x 4.09)/2 =	15.21mq
(3.54 x 1.21)/2 =	2.14mq
(5.49 x 0.72)/2 =	1.98mq
5.06 x 0.36 =	1.82mq
8.41 x 5.44 =	45.74mq
4.40 x 1.30 =	5.72mq
3.53 x 6.63 =	23.40mq
2.84 x 8.83 =	25.08mq
3.53 x 4.95 =	17.37mq
(5.37+4.94)/2 x 5.20 =	26.81mq
(6.89 x 3.68)/2 =	12.66mq
(6.49 x 3.42)/2 =	11.19mq
(18.41+18.79)/2 x 3.93 =	56.79mq
(19.08+18.76)/2 x 8.53 =	161.39mq
(12.89+12.40)/2 x 5.09 =	63.33mq
(13.45+13.40)/2 x 2.09 =	28.06mq
(14.29+14.17)/2 x 5.57 =	79.26mq
(14.30 x 4.49)/2 =	31.50mq
	567.20mq
8.41 x 5.44 =	16.52mq
8.41 x 5.44 =	11.64mq
8.41 x 5.44 =	11.76mq
	29.92mq
SLP= 567.20mq -29.32mq =	537.89mq
SLP TURISTICO-RICETTIVA	537.89mq
Sup. COMMERCIALE (come approvata)	258.99mq

PIANO TERRA



PIANO TERRA

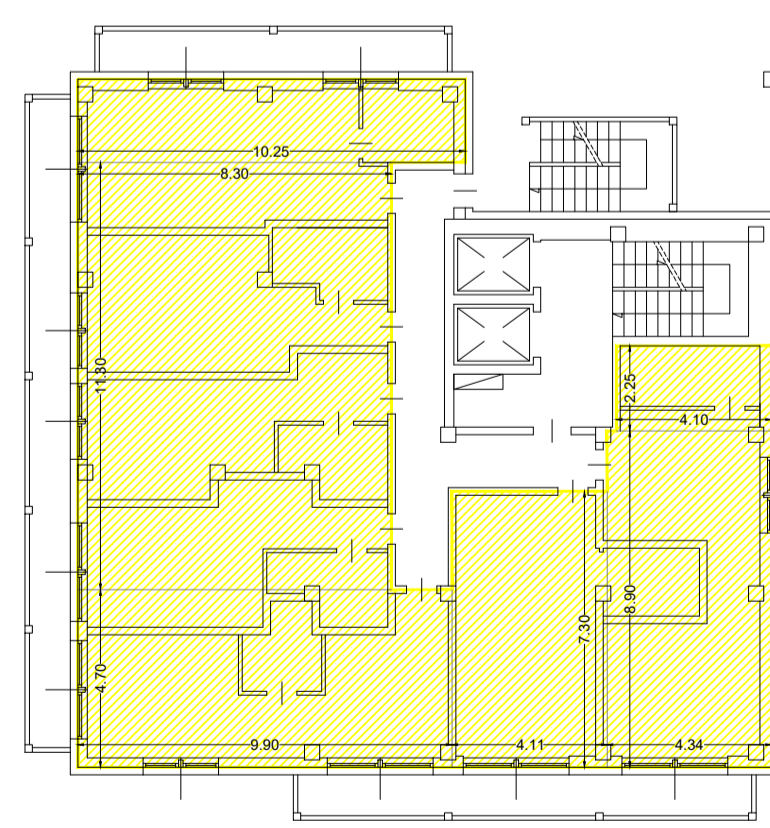
10.00 x 3.70 =	37.00mq
9.80 x 5.60 =	54.88mq
13.35 x 8.90 =	118.82mq
SLP TURISTICO-RICETTIVA	210.70mq

PLANIMETRIA DI PROGETTO



SUPERFICIE FONDIARIA		SUPERFICIE COPERTA	
112.17 x 34.93/2 =	212.53mq	18.60 x 18.75 =	348.75mq
112.76 x 46.55/2 =	256.99mq		
146.25 x 14.00/2 =	101.77mq		
146.28 x 9.49/2 =	69.24mq		
188.34 x 2.11/2 =	40.24mq		
151.76 x 18.33/2 =	139.86mq		
125.89 x 12.89/2 =	166.86mq		
	1420.80mq		

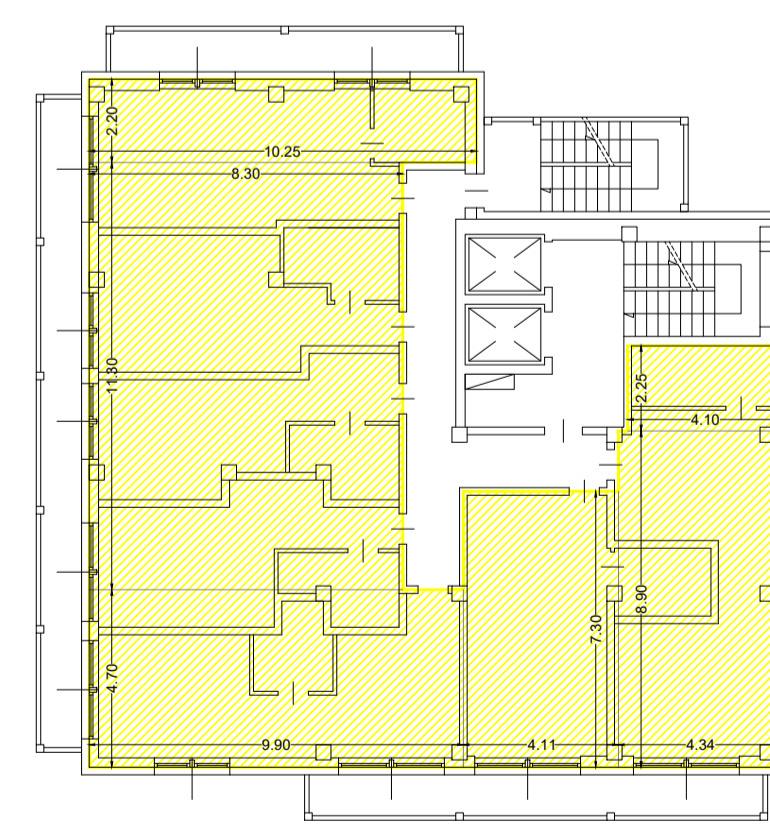
PIANO PRIMO



PIANO PRIMO

10.25 x 2.20 =	22.55mq
8.30 x 11.30 =	93.79mq
9.90 x 4.70 =	46.53mq
4.11 x 7.30 =	30.00mq
4.34 x 8.90 =	38.63mq
4.10 x 2.25 =	9.23mq
SLP TURISTICO-RICETTIVA	240.72mq

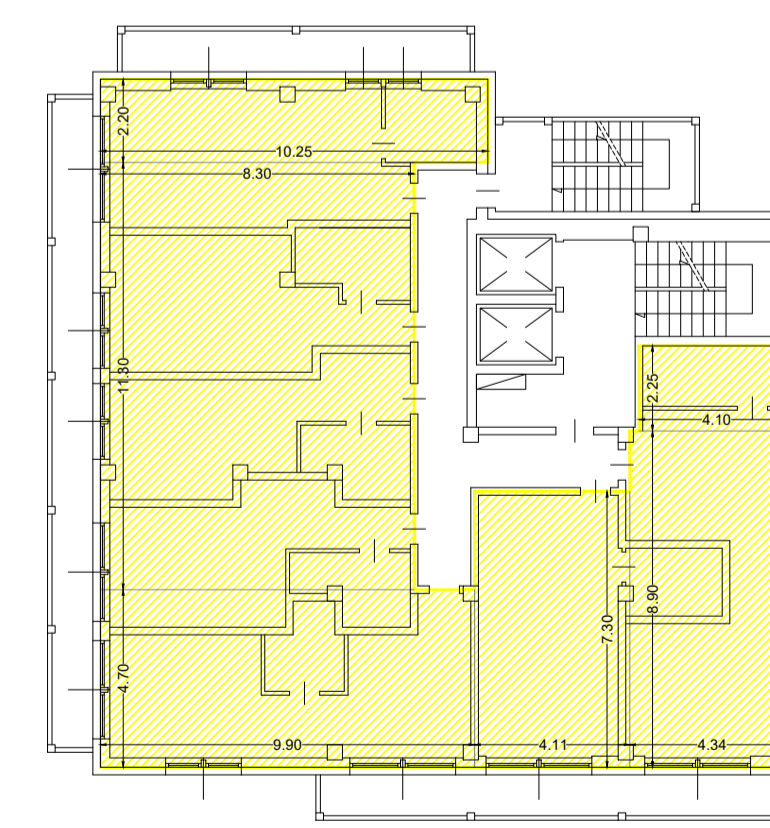
PIANO SECONDO



PIANO SECONDO

10.25 x 2.20 =	22.55mq
8.30 x 11.30 =	93.79mq
9.90 x 4.70 =	46.53mq
4.11 x 7.30 =	30.00mq
4.34 x 8.90 =	38.63mq
4.10 x 2.25 =	9.23mq
SLP TURISTICO-RICETTIVA	240.72mq

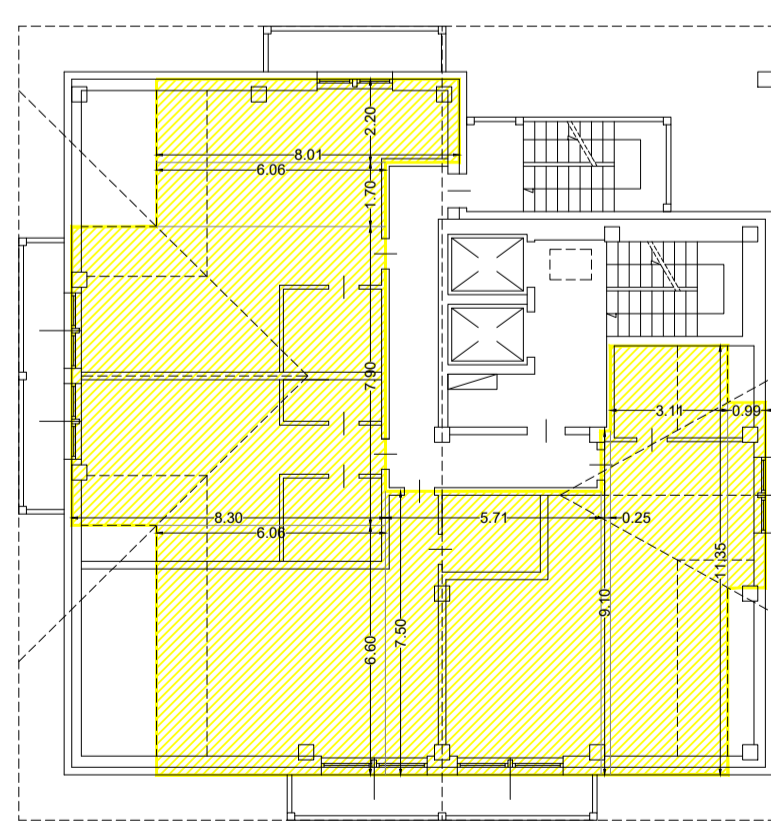
PIANO TERZO



PIANO TERZO

10.25 x 2.20 =	22.55mq
8.30 x 11.30 =	93.79mq
9.90 x 4.70 =	46.53mq
4.11 x 7.30 =	30.00mq
4.34 x 8.90 =	38.63mq
4.10 x 2.25 =	9.23mq
SLP TURISTICO-RICETTIVA	240.72mq

PIANO QUARTO



PIANO QUARTO

8.01 x 2.20 =	17.62mq
6.06 x 1.70 =	10.30mq
8.30 x 7.90 =	65.57mq
6.06 x 6.60 =	40.00mq
5.71 x 7.50 =	42.83mq
0.75 x 9.10 =	6.83mq
3.11 x 11.35 =	35.30mq
0.99 x 4.90 =	4.85mq
SLP TURISTICO-RICETTIVA	218.74mq

CALCOLO SUPERFICIE LORDA IN PROGETTO

PIANO	TURISTICO-RICETTIVA	COMMERCIALE	TOTALE	ACCESSORIA
INTERRATO	304.39 mq	45.39 mq	254.18 mq	93.46 mq
SEMINTERRATO	537.89 mq	258.99 mq	796.28 mq	
TERRA	210.70 mq		266.77 mq	
PRIMO	240.72 mq		240.72 mq	
SECONDO	240.72 mq		240.72 mq	
TERZO	240.72 mq		240.72 mq	
QUARTO	218.74 mq		218.74 mq	
TOTALE	1993.88 mq	303.78 mq	2297.66 mq	93.46 mq

VERIFICA SUPERFICIE LORDA

SLP ESISTENTE = SLP IN PROGETTO	VERIFICATO