

**LIVELLO -1 (piano secondo interrato)**

Scala 1:400  
 V1 143,03 x H 3,45 = 493,45 m<sup>2</sup>  
 Totale = 493,45 m<sup>2</sup>



**LIVELLO 0 (piano primo interrato)**

Scala 1:400  
 V1 140,23 x H 4,45 = 623,82 m<sup>2</sup>  
 V2 515,28 x H 3,58 = 1844,89 m<sup>2</sup>  
 V3 76,97 x H 3,10 = 239,01 m<sup>2</sup>  
 V4 26,53 x H 4,40 = 117,13 m<sup>2</sup>  
 Totale = 4814,97 m<sup>2</sup>

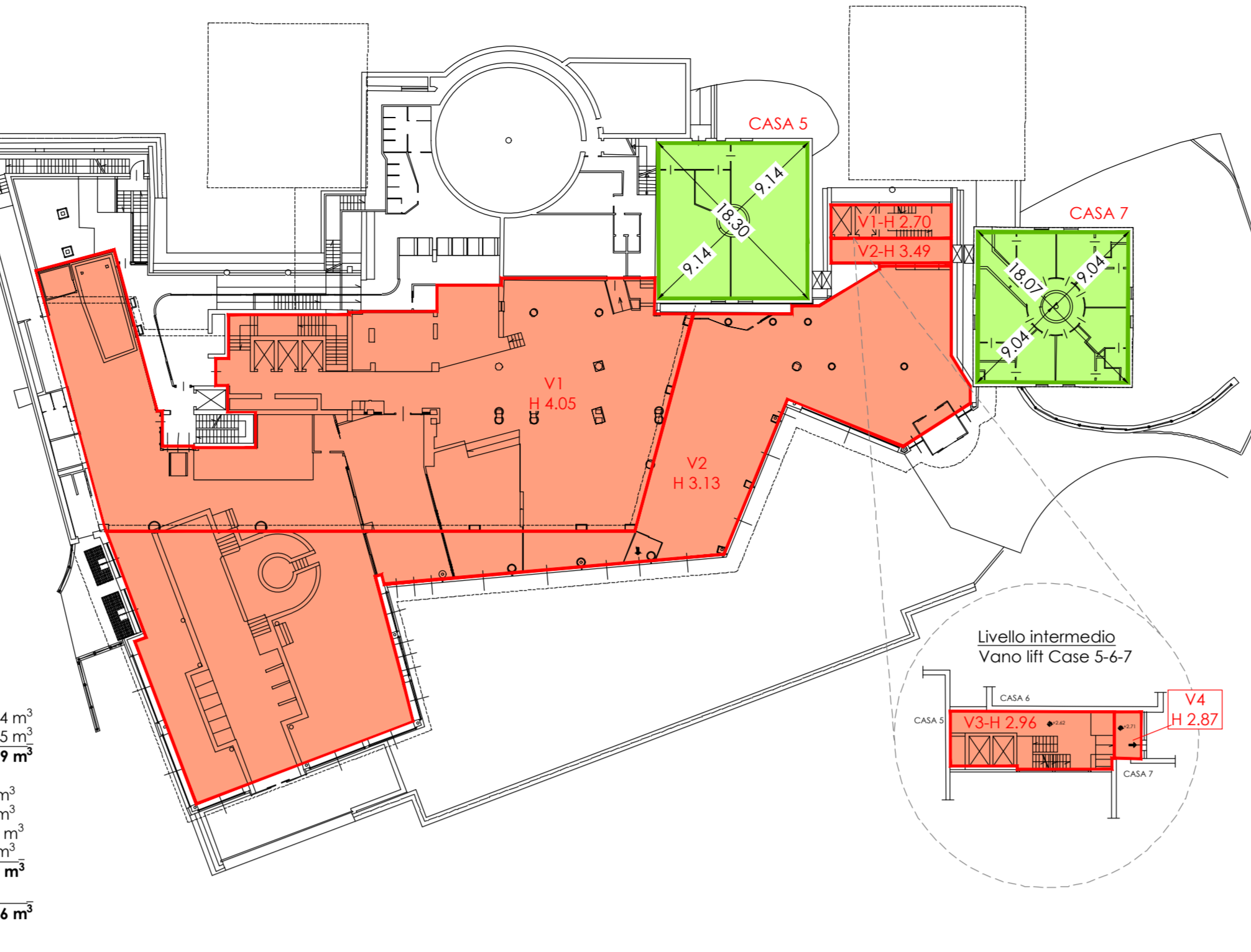


**LIVELLO 1 (piano terra)**

Scala 1:400  
 Boccia centrale:  
 V1 93,67 x H 4,05 = 379,34 m<sup>2</sup>  
 V2 86,03 x H 3,13 = 268,19 m<sup>2</sup>  
 Totale = 647,53 m<sup>2</sup>

Vano lift Case 5-7:  
 V1 28,81 x H 2,70 = 77,25 m<sup>2</sup>  
 V2 21,38 x H 3,49 = 74,62 m<sup>2</sup>  
 V3 47,15 x H 2,36 = 111,28 m<sup>2</sup>  
 V4 8,97 x H 2,87 = 25,74 m<sup>2</sup>  
 Totale = 376,37 m<sup>2</sup>

Totale = 6847,86 m<sup>2</sup>

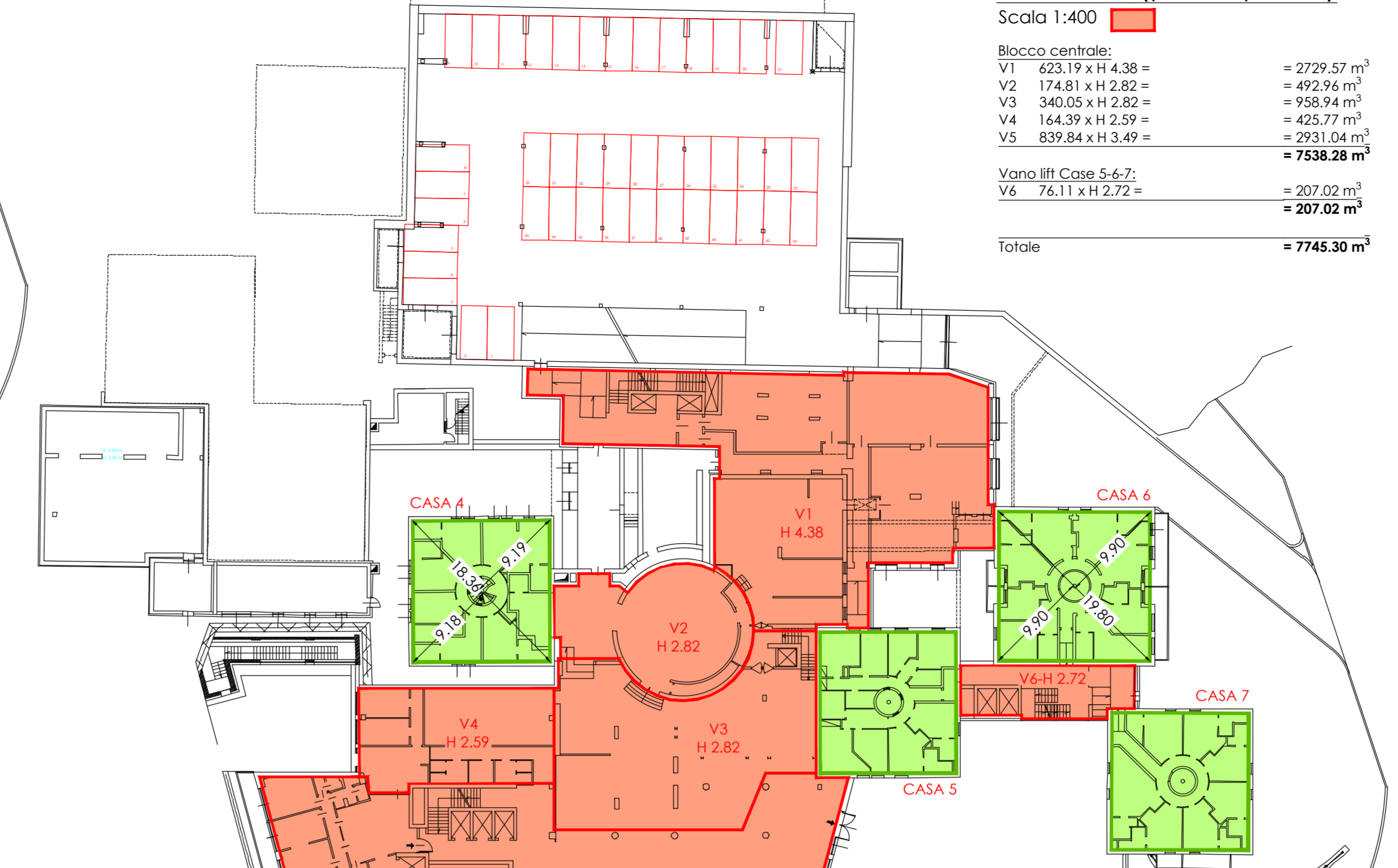


**LIVELLO 2 (piano primo)**

Scala 1:400  
 Boccia centrale:  
 V1 63,19 x H 4,38 = 276,87 m<sup>2</sup>  
 V2 174,49 x H 2,82 = 492,74 m<sup>2</sup>  
 V3 340,05 x H 2,80 = 952,14 m<sup>2</sup>  
 V4 144,39 x H 2,99 = 431,73 m<sup>2</sup>  
 V5 839,84 x H 3,49 = 2931,54 m<sup>2</sup>  
 Totale = 7155,08 m<sup>2</sup>

Vano lift Case 5-7:  
 V1 28,81 x H 2,70 = 77,25 m<sup>2</sup>  
 V2 21,38 x H 3,49 = 74,62 m<sup>2</sup>  
 V3 47,15 x H 2,36 = 111,28 m<sup>2</sup>  
 V4 8,97 x H 2,87 = 25,74 m<sup>2</sup>  
 Totale = 376,37 m<sup>2</sup>

Totale = 7745,30 m<sup>2</sup>

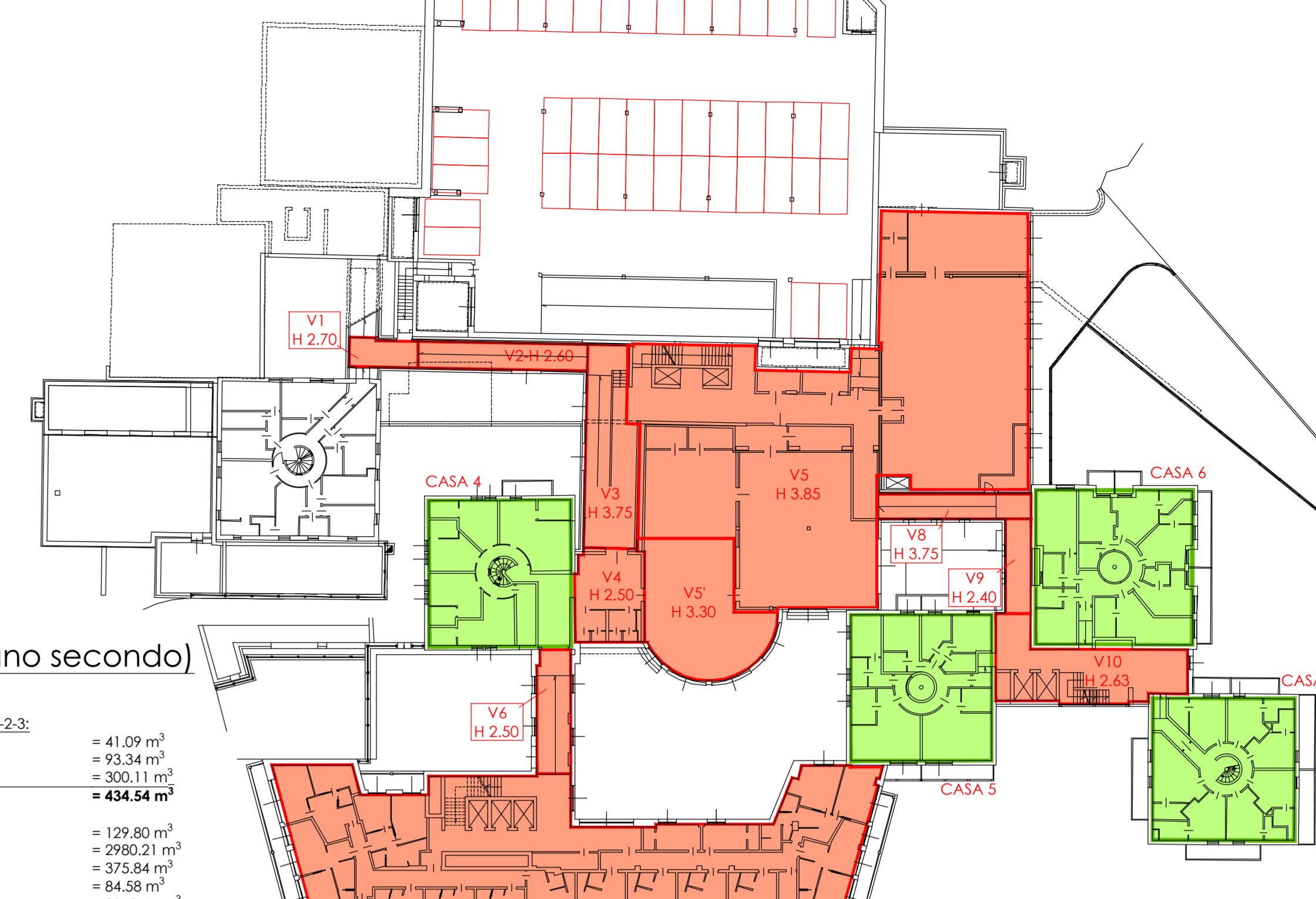


**LIVELLO 3 (piano secondo)**

Scala 1:400  
 Turno collegamento case 1-2-3:  
 V1 15,21 x H 2,70 = 41,09 m<sup>2</sup>  
 V2 35,99 x H 2,40 = 86,34 m<sup>2</sup>  
 V3 80,03 x H 3,75 = 300,11 m<sup>2</sup>  
 Totale = 427,54 m<sup>2</sup>

Boccia centrale:  
 V4 51,92 x H 2,50 = 129,80 m<sup>2</sup>  
 V5 774,88 x H 3,85 = 2982,21 m<sup>2</sup>  
 V6 113,89 x H 3,30 = 375,84 m<sup>2</sup>  
 V7 30,85 x H 2,50 = 77,13 m<sup>2</sup>  
 V8 806,23 x H 3,49 = 2815,67 m<sup>2</sup>  
 V9 30,87 x H 3,75 = 115,76 m<sup>2</sup>  
 V10 19,23 x H 4,40 = 85,01 m<sup>2</sup>  
 Vano lift Case 5-7:  
 V1 28,81 x H 2,70 = 77,25 m<sup>2</sup>  
 V2 21,38 x H 3,49 = 74,62 m<sup>2</sup>  
 V3 47,15 x H 2,36 = 111,28 m<sup>2</sup>  
 V4 8,97 x H 2,87 = 25,74 m<sup>2</sup>  
 Totale = 6564,23 m<sup>2</sup>

Totale = 7214,92 m<sup>2</sup>



**LIVELLO 4 (piano terzo)**

Scala 1:400  
 Vano lift Case 1-2:  
 V1 68,53 x H 3,89 = 266,66 m<sup>2</sup>  
 V2 2,29 x H 4,99 = 11,43 m<sup>2</sup>  
 Totale = 288,07 m<sup>2</sup>

Turno collegamento case 1-2-3:  
 V1 15,21 x H 2,70 = 41,09 m<sup>2</sup>  
 V2 35,99 x H 2,40 = 86,34 m<sup>2</sup>  
 V3 80,03 x H 3,75 = 300,11 m<sup>2</sup>  
 Totale = 427,54 m<sup>2</sup>

Boccia centrale:  
 V4 75,81 x H 3,00 = 227,43 m<sup>2</sup>  
 V5 118,47 x H 3,00 = 355,41 m<sup>2</sup>  
 V6 57,25 x H 3,74 = 214,70 m<sup>2</sup>  
 V7 119,88 x H 3,00 = 359,64 m<sup>2</sup>  
 Vano lift Case 5-7:  
 V1 28,81 x H 2,70 = 77,25 m<sup>2</sup>  
 V2 21,38 x H 3,49 = 74,62 m<sup>2</sup>  
 V3 47,15 x H 2,36 = 111,28 m<sup>2</sup>  
 V4 8,97 x H 2,87 = 25,74 m<sup>2</sup>  
 Totale = 177,55 m<sup>2</sup>

Totale = 5618,27 m<sup>2</sup>



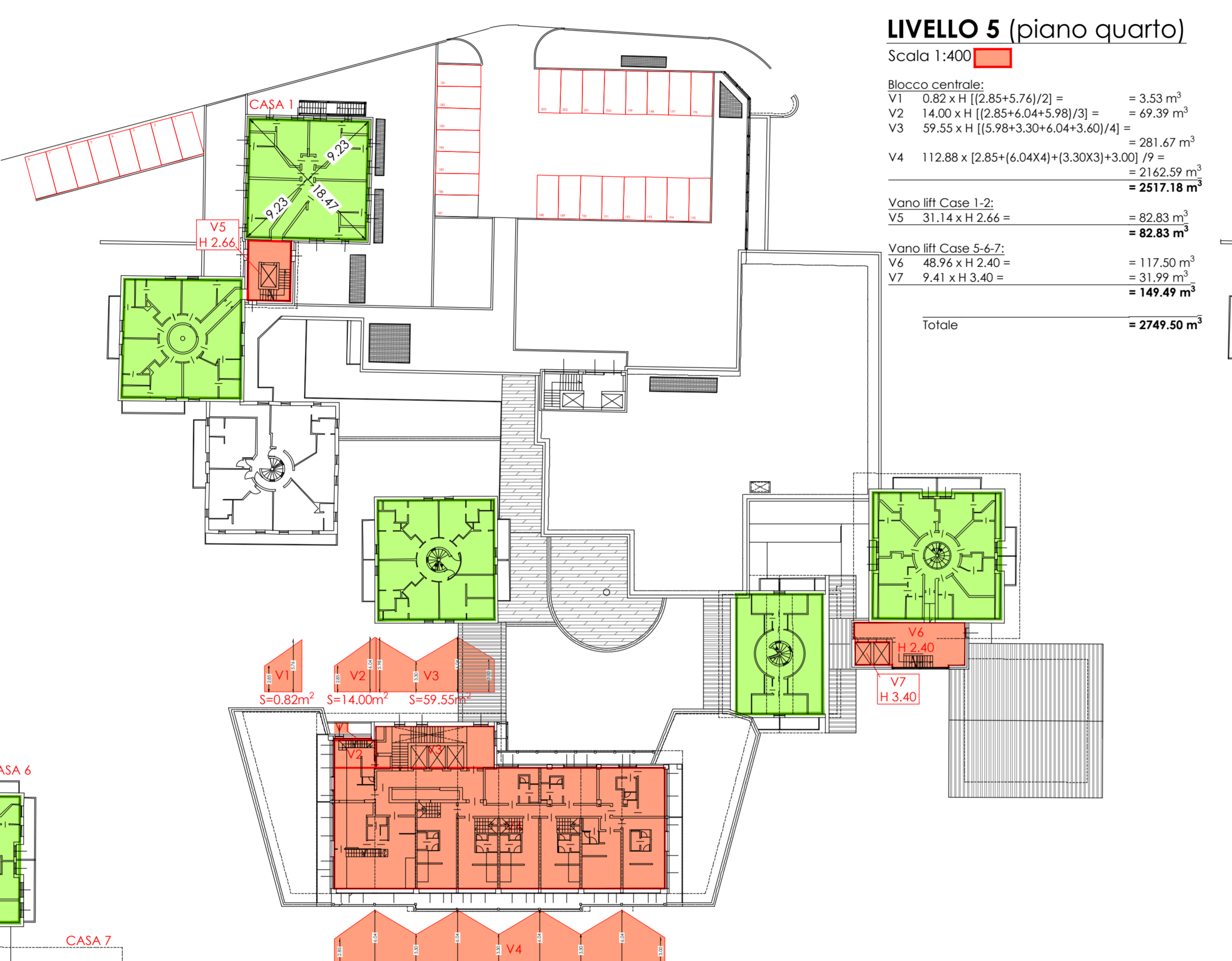
**LIVELLO 5 (piano quarto)**

Scala 1:400  
 Boccia centrale:  
 V1 0,82 x H (2,85+7,67/2) = 3,33 m<sup>2</sup>  
 V2 14,03 x H (2,85+6,94+3,98/2) = 69,39 m<sup>2</sup>  
 V3 59,55 x H (5,98+3,30+6,04+3,60/4) = 281,67 m<sup>2</sup>  
 V4 112,88 x (2,85+6,04+4,30+3,30)/3 = 216,33 m<sup>2</sup>  
 Totale = 570,72 m<sup>2</sup>

Vano lift Case 1-2:  
 V1 31,14 x H 2,81 = 87,50 m<sup>2</sup>  
 Totale = 87,50 m<sup>2</sup>

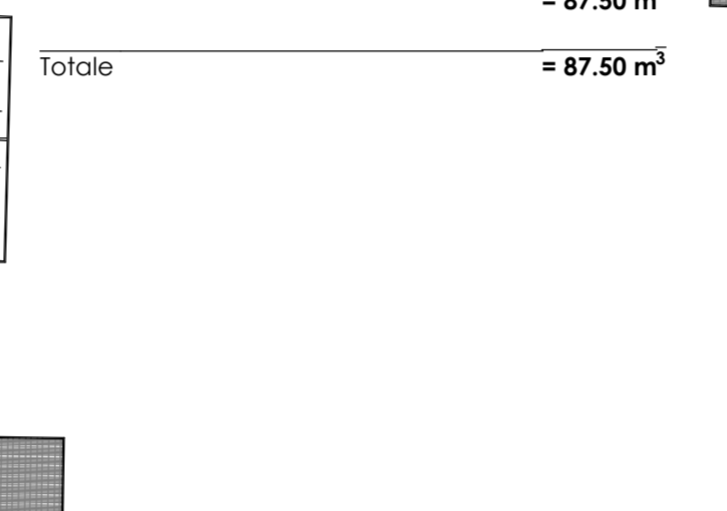
Vano lift Case 5-7:  
 V1 28,81 x H 2,70 = 77,25 m<sup>2</sup>  
 V2 21,38 x H 3,49 = 74,62 m<sup>2</sup>  
 V3 47,15 x H 2,36 = 111,28 m<sup>2</sup>  
 V4 8,97 x H 2,87 = 25,74 m<sup>2</sup>  
 Totale = 288,87 m<sup>2</sup>

Totale = 2747,50 m<sup>2</sup>



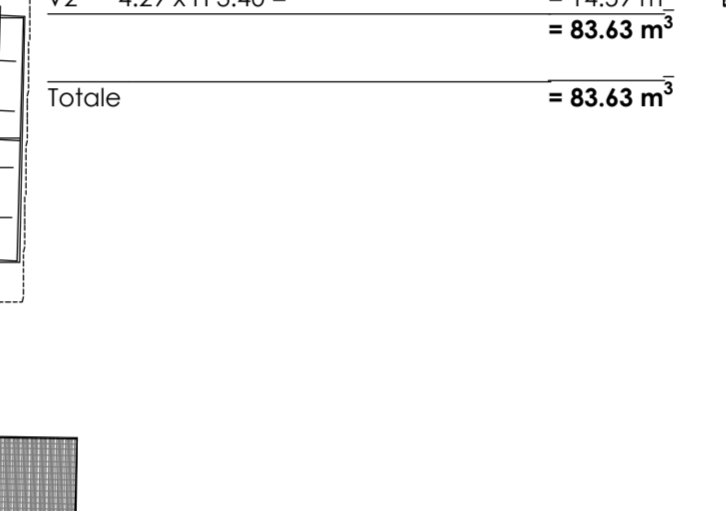
**LIVELLO 6 (piano quinto)**

Scala 1:400  
 Vano lift Case 1-2:  
 V1 31,14 x H 2,81 = 87,50 m<sup>2</sup>  
 Totale = 87,50 m<sup>2</sup>



**LIVELLO 7 (piano sesto)**

Scala 1:400  
 Vano lift Case 1-2:  
 V1 31,14 x H 2,81 = 87,50 m<sup>2</sup>  
 V2 4,29 x H 3,40 = 14,59 m<sup>2</sup>  
 Totale = 102,09 m<sup>2</sup>



**VERIFICHE PARCHEGGI E POSTI AUTO**

CALCOLO VOLUMI DI PROGETTO	
Livello -1	= 493,45 m <sup>3</sup>
Livello 0	= 6631,79 m <sup>3</sup>
Livello +1	= 6475,30 m <sup>3</sup>
Livello +2	= 7745,30 m <sup>3</sup>
Livello +3	= 7216,92 m <sup>3</sup>
Livello +4	= 5618,27 m <sup>3</sup>
Livello +5	= 2749,50 m <sup>3</sup>
Livello +6	= 87,50 m <sup>3</sup>
Livello +7	= 83,63 m <sup>3</sup>
Totale	= 37474,22 m <sup>3</sup>

Casa 1	= 1711,61 m <sup>2</sup>
Casa 2	= 1678,52 m <sup>2</sup>
Casa 3	= 2145,05 m <sup>2</sup>
Casa 4	= 1940,24 m <sup>2</sup>
Casa 5	= 2295,40 m <sup>2</sup>
Casa 6	= 1653,95 m <sup>2</sup>
Casa 7	= 11424,77 m <sup>2</sup>
Totale	= 11424,77 m <sup>2</sup>

TOTALE VOLUME IN PROGETTO (ringsombro fabbricato fuori terra e SLP interrato): 37474,22 + 11424,77 = 48898,99 m<sup>3</sup>

CALCOLO SUPERFICIE A PARCHEGGIO IN PROGETTO IN BASE AL P.G.T. VIGENTE

Superficie minima da destinare a parcheggio:  
 10m<sup>2</sup> ogni 100m<sup>3</sup> (ai sensi art. 33.4 D.N. del P.G.T.):  
 48898,99 m<sup>3</sup> / 10 = 4889,89 m<sup>2</sup>

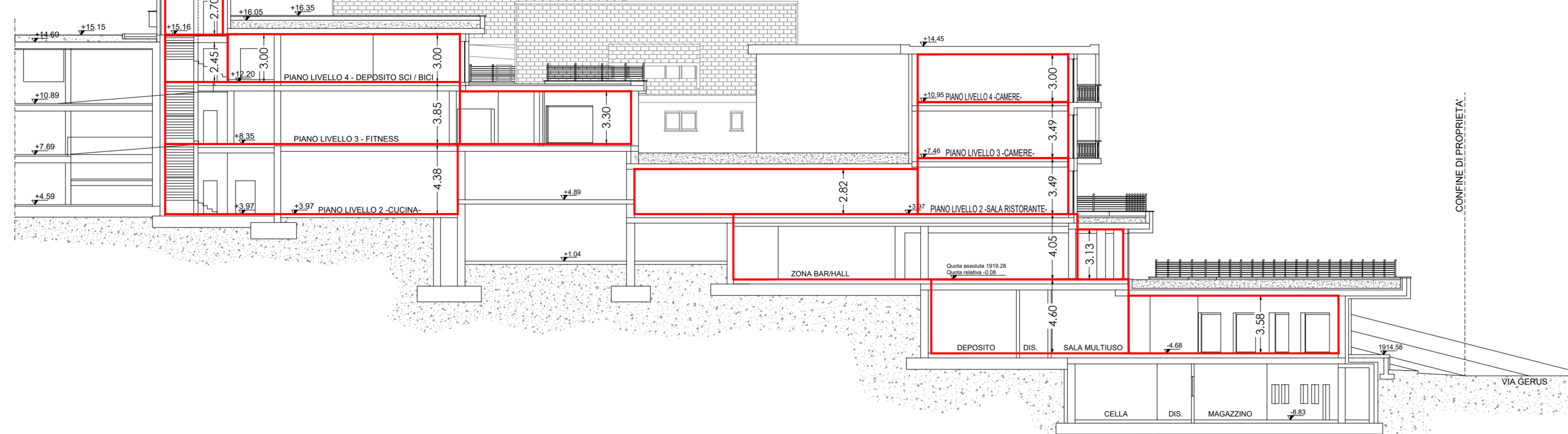
Superficie a parcheggio in progetto (vedi Pianta di progetto):  
 Livello 2 + Livello 3 + Livello 4 + Livello 5 (esterna) = 1214,16 + 1133,42 + 3485,68 + 505,48 = 6338,74 m<sup>2</sup>  
 6338,74 m<sup>2</sup> (progetto) > 4889,89 m<sup>2</sup> (richiesta) **VERIFICATO**

CALCOLO POSTI AUTO (1 posto auto ogni camera d'albergo):  
 = 182 camere in progetto (vedi Tav.7.a) = 182 posti auto necessari

Posti auto in progetto:  
 n°43 (Livello 2) + n°42 (Livello 3) + n°52+43 (Livello 4) + n°23 (Livello 5) =  
 Totale = 180 Interni + 23 esterni realizzati > 182 necessari **VERIFICATO**

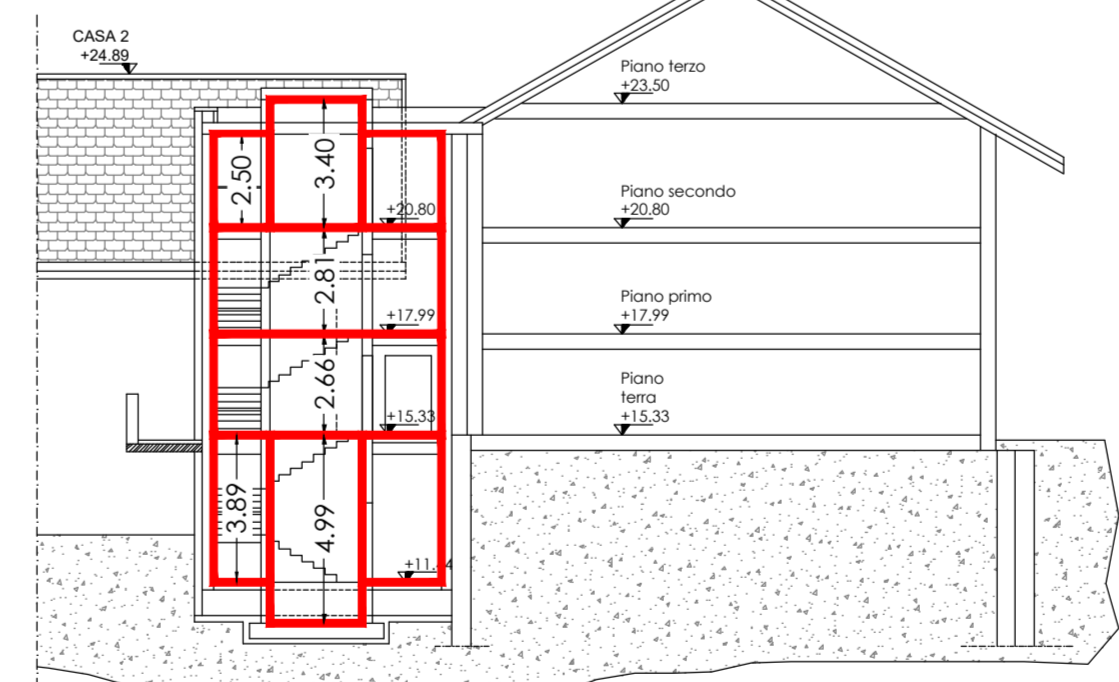
**SCHEMA altezza H**

Scala 1:200



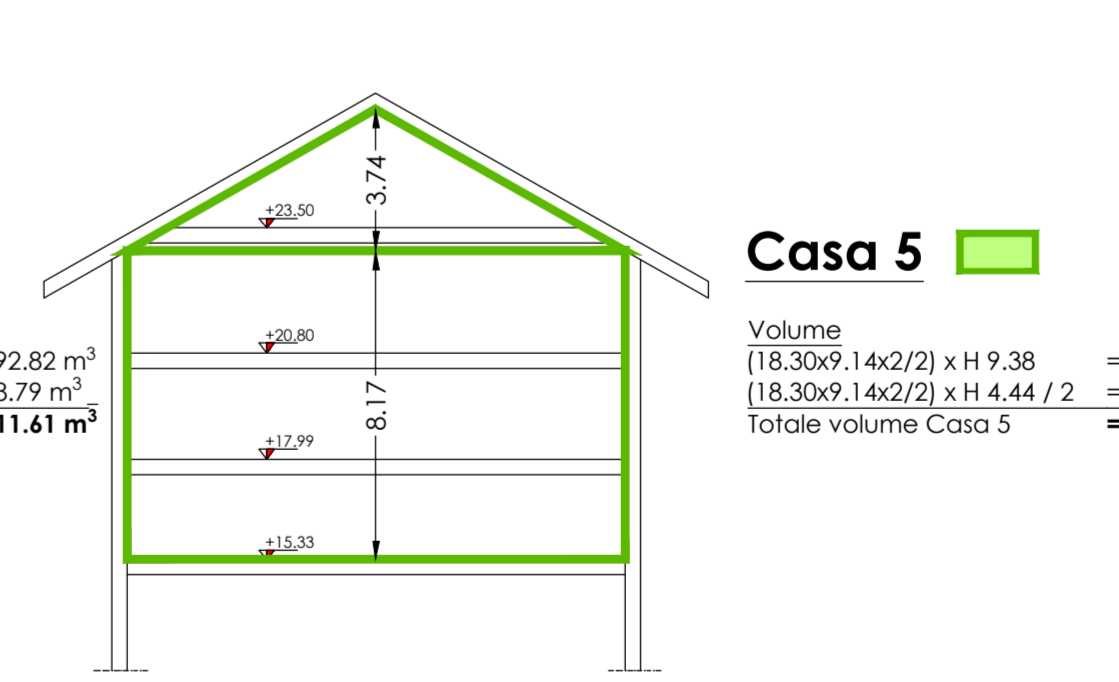
**SCHEMA altezza H**

Scala 1:200



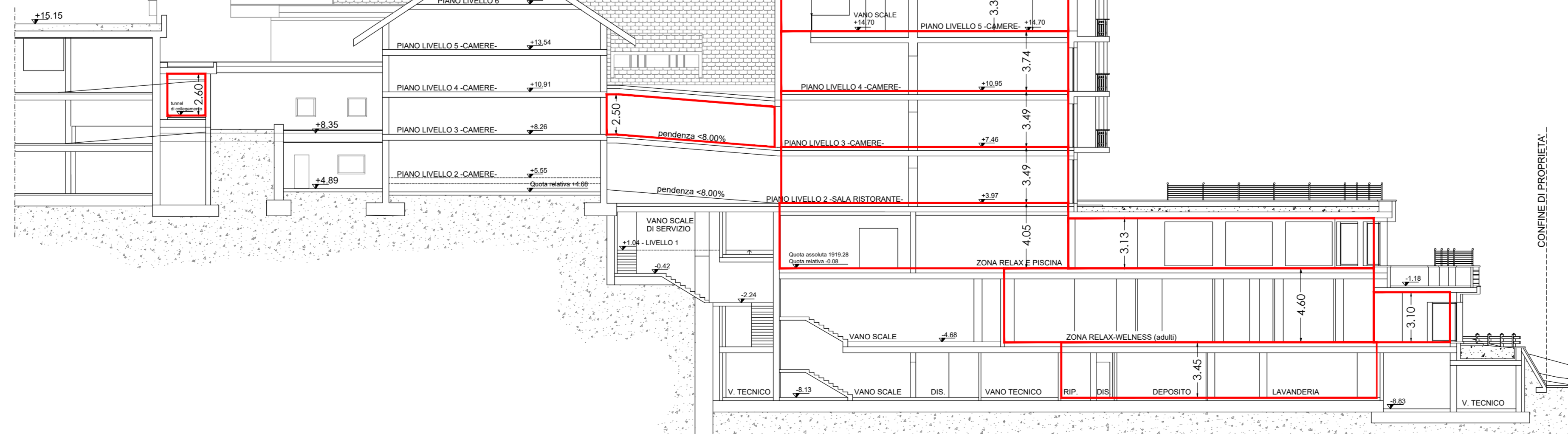
**SCHEMA altezza H**

Scala 1:200



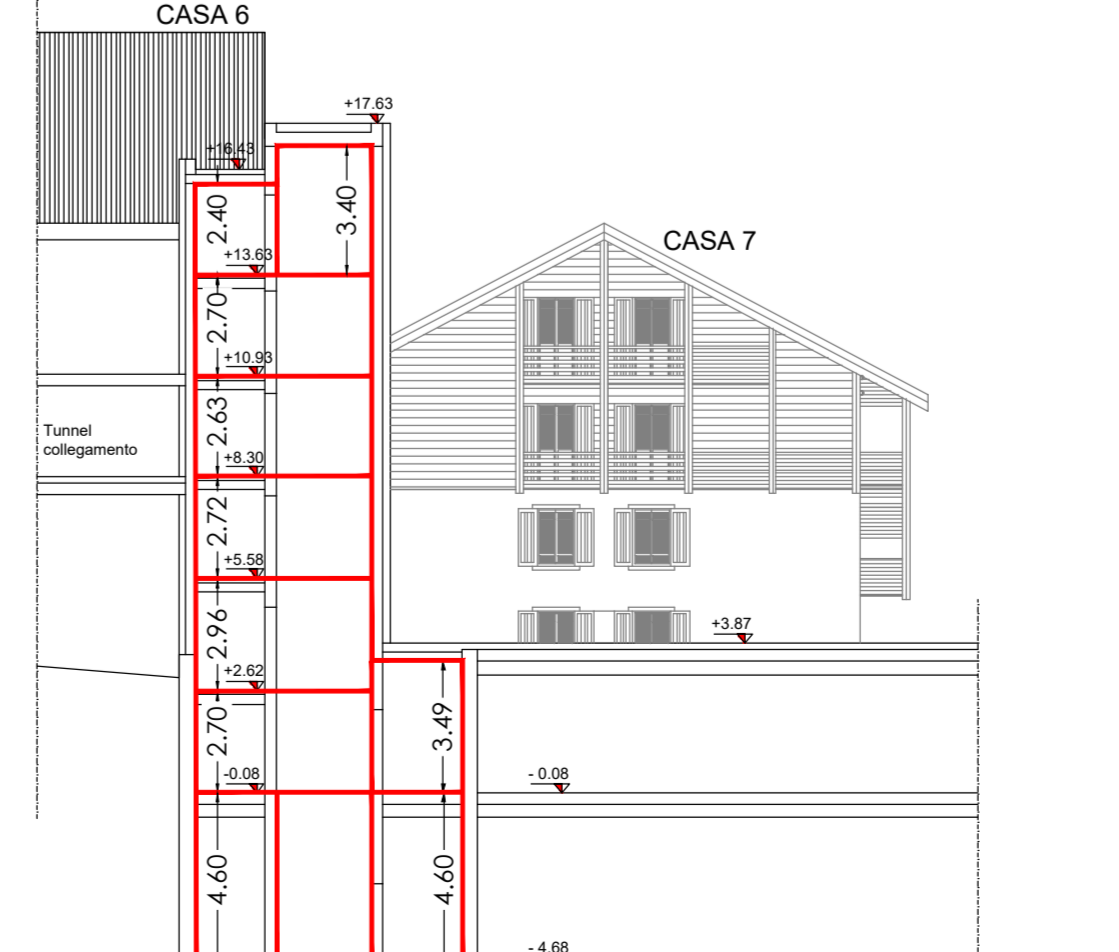
**SCHEMA altezza H**

Scala 1:200



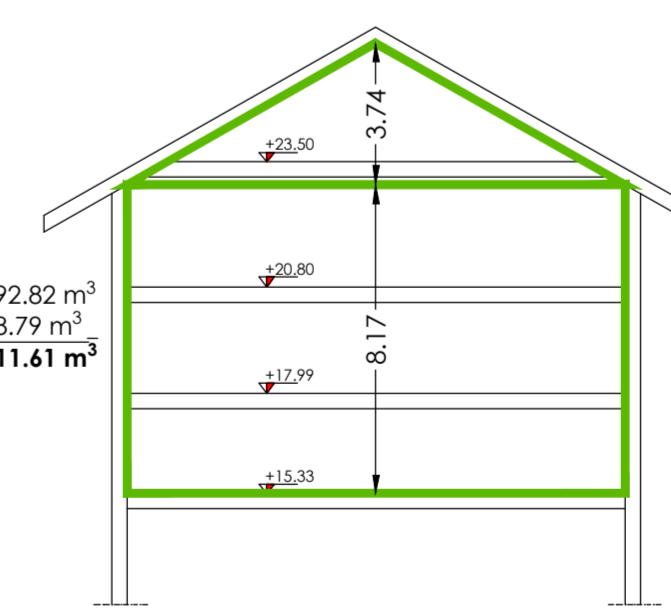
**SCHEMA altezza H**

Scala 1:200



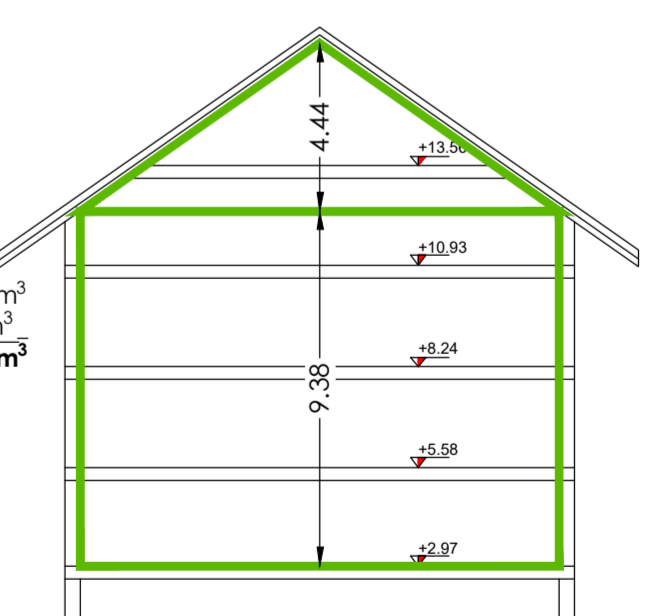
**Casa 1**

Volume:  
 (18,47x23+23x23/2) x H 8,17 = 1392,82 m<sup>3</sup>  
 (18,47x23+23x23/2) x H 3,74 / 2 = 318,79 m<sup>3</sup>  
 Totale volume Casa 1 = 1711,61 m<sup>3</sup>



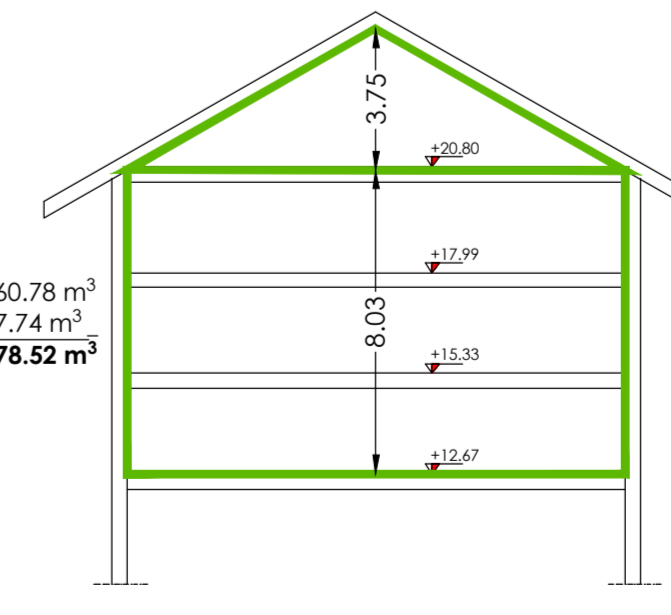
**Casa 5**

Volume:  
 (18,30x19+23x19/2) x H 9,38 = 1568,92 m<sup>3</sup>  
 (18,30x19+23x19/2) x H 4,44 / 2 = 371,32 m<sup>3</sup>  
 Totale volume Casa 5 = 1940,24 m<sup>3</sup>



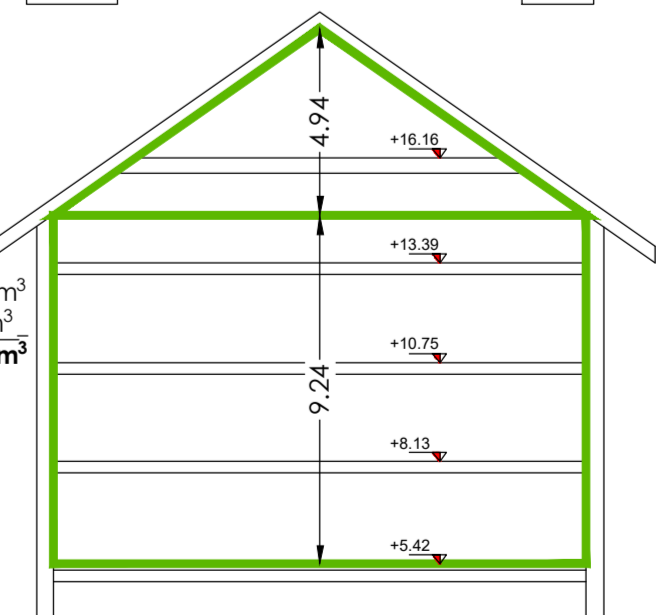
**Casa 2**

Volume:  
 (18,34x17+17x17/2) x H 8,03 = 1360,78 m<sup>3</sup>  
 (18,34x17+17x17/2) x H 3,75 / 2 = 317,74 m<sup>3</sup>  
 Totale volume Casa 2 = 1678,52 m<sup>3</sup>



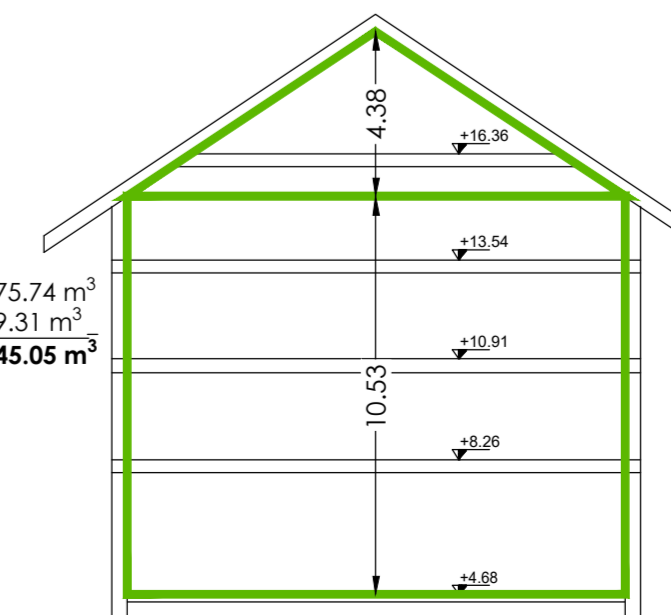
**Casa 6**

Volume:  
 (19,30x19+23x19/2) x H 9,24 = 1811,23 m<sup>3</sup>  
 (19,30x19+23x19/2) x H 4,94 / 2 = 484,17 m<sup>3</sup>  
 Totale volume Casa 6 = 2295,40 m<sup>3</sup>



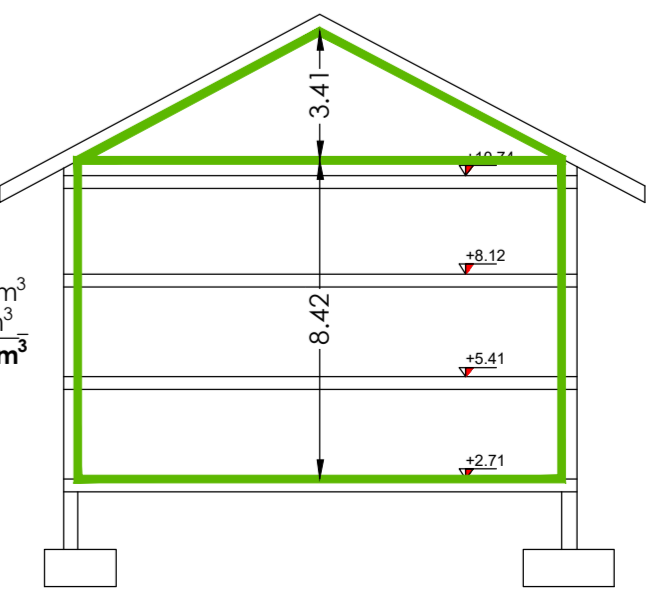
**Casa 4**

Volume:  
 (18,34x17+17x17/2) x H 10,53 = 1775,74 m<sup>3</sup>  
 (18,34x17+17x17/2) x H 4,58 / 2 = 369,31 m<sup>3</sup>  
 Totale volume Casa 4 = 2145,05 m<sup>3</sup>



**Casa 7**

Volume:  
 (18,07x24+23x24/2) x H 8,42 = 1375,43 m<sup>3</sup>  
 (18,07x24+23x24/2) x H 3,41 / 2 = 275,52 m<sup>3</sup>  
 Totale volume Casa 7 = 1653,95 m<sup>3</sup>



Geometra MOTTINI DAVIDE  
 Via Dala del Rio, 1 - 23041, Livigno (SO)  
 tel. fax (0342) 991911  
 e-mail: info@studiodmp.eu  
 c.f. 5071290146

Comune: LIVIGNO Provincia: SONDRIO

Località/Via: TEOLA

Identificazione catastale:  
 Foglio n. 41 Mapp. n. 176-992-993-(1024)-276'-(908)'

Progetto: VIII VARIANTE IN CORSO D'OPERA  
 MODIFICHE INTERNE ED ARCHITETTONICHE DA  
 APPLICARE AL COMPLESSO AD USO TURISTICO  
 RICETTIVO DENOMINATO "ALPEN VILLAGE"

Oggetto: VERIFICHE URBANISTICHE  
 CALCOLO VOLUME + PARCHEGGI

Committenti: SOC. BIVIO S.R.L.

Tavola: 7.b  
 Scala: 1:200 - 1:400  
 Data: marzo 2023  
 Aggiornamento: marzo 2023  
 Data: giugno 2023

DSGN: B.B. CNTL: DMP2

Il tecnico